



CON- TENT

03

About Us

04

Services

07

Management

09

*Residential -
Single Dwelling*

17

*Residential -
Apartment Buildings*

41

*Commercial -
Retail*

50

*Commercial -
Offices*

65

*Commercial -
Hotels & Lodges*

73

*Commercial
-Recreation*

76

*Industrial -
Factories*

85

Urban Design

91

*Arts, Culture &
Heritage*

101

Institutional

112

Other Projects

117

Interior Design

122

Contact Details

ABOUT US

Established in 1992, IDC provides the full range of architectural services for projects of all sizes. Through our unique method of management, we link experts from numerous disciplines into a coordinated project team, providing lifecycle facility solutions geared towards the overall success of our clients' businesses.

Our wealth of experience includes research undertaken into all fields of our areas of operation, which is then applied to direct planning and development; expertise in housing, with a particular focus on affordable housing that allows us to provide a comprehensive approach to housing issues; and a strong commitment to creating an accessible environment for people living with disabilities, with active involvement in developing new standards to address this need in our society.

We are also committed to prioritising developmental needs, and facilitate the establishment of structures within communities, access to funding, and community training with a view to empowering people towards self-reliance.

Integrated into our service provision will be consultation and close collaboration with the Client. This will enhance and develop our methodology for the execution, commissioning and hand over of the project in terms of our service. The extensive experience of the members of our architectural team will be integrated into our service provision. Included in this is our responsibilities relating to the design functions, administration, management, communication co-ordination, technical co-ordination and quality control of the project.

We would adopt a multi-disciplinary approach in the handling of the project, displaying a globular interest in the total project encompassing the design team, construction personnel and client. Primary concern would be with the development of the brief into the design concept and with the management administration of the project with a view to expediting the project as a whole.

SERVICES

ARCHITECTURE

IDC provides the full range of architectural services. Our unique method of management provides facility solutions based on overall success of our customers business by linking experts from numerous disciplines into a coordinated project team. We tackle projects of all sizes, in all fields of our areas of operation and have a flexible approach to the ways in which we are appointed.

Housing: IDC has broad expertise in housing, especially in the low income group and provides a comprehensive approach to housing issues. Environmental Accessibility and specialist facilities for the disabled: IDC have a special commitment to the development of an accessible environment and are developing new standards to address the disability deficiency in our society.

RESEARCH & DEVELOPMENT

IDC's principals are internationally recognised, and undertake research into all fields of our areas of operation. All research is applied to direct planning and development.

COMPUTER AIDED DESIGN

IDC operates the Computer Aided Design and Drafting System (CADD), internationally regarded as the most feasible and advanced system of its time. These include Archicad, AutoCAD and Revit programmes. Other programmes are Artlantis rendering suite and SketchUp.

COMMUNITY PROJECT MANAGEMENT & FACILITATION SERVICES

To facilitate the establishment of structures within communities, which will assist in prioritising development needs, as well as facilitating access to funding and ensuring that communities are trained, with a view to empower them to be self reliant. To ensure the smooth running on promotion of sustainable integrated development of the people of South Africa (especially in the Eastern Cape) with a special focus on individuals and communities disadvantaged by apartheid and other injustices of the past.

HERITAGE

IDC Architects and "Lord Cultural Resources" have formed a joint venture to bring a combined expertise together, to facilitate the planning and design of museums, community cultural centres, art galleries, historic sites and tourist attractions in the new South Africa. "Lord Cultural Resources" is an International firm specialising in the planning and management of cultural and heritage facilities, with offices in Canada, the United States, London, Vienna, Singapore and Australia.

IDC Architects operates in direct association with Lord Cultural Resources. This provides our consultancy with extensive international expertise in the field of developing historic sites, exhibitions, interactive interpretive centres and cultural facilities. All consulting is charged at South African rates and this affords our clients cost effective specialised services in the field.

PUBLIC PRIVATE PARTNERSHIP (PPP) ARCHITECTURAL TECHNICAL TRANSACTION ADVISORY (TA) SERVICES

At the project inception stage the IDC project team will be introduced to the client as well as to confirm the client's requirements with regards to the work plan. This will also serve as an opportunity for all queries to be addressed. We also propose a stakeholder workshop to align the various expectations around a project of such as work scope.

At the needs analysis phase, we would be aiming to document the project definition, align it to the strategic objectives of the client, and conduct a high level financial assessment of the client to determine affordability. Study existing pre-feasibility studies and the business case formulated. Identify areas that require revision or updating. Analyse the budgets allocated by the province, national departments, and other possible sources capital for the project. Analyse current facility infrastructure plans. Identify all relevant stakeholders and formulate an engagement plan. Define the outputs to be attained in the other PPP phases of the study.

At the options analysis phase, the technical work stream would take the lead in exploring possible high level business case on the options considered for the facilities development. Develop designs, recommend a preferred option and provide costs.

MANAGEMENT





EAST LONDON/JOHANNESBURG

Bunmi Ilori - Principal Architect / Partner

B.A.(Hon.), Dip Arch (Birm), R.I.B.A. Arch (S.A.) M.I.A



PORT ELIZABETH

Charles Louw - Principal Architect / Partner

B. Build (NMMU), B. Arch (NMMU), Pr Arch MI Arch (ECIA)

RESIDENTIAL

S I N G L E D W E L L I N G S



PE

House Louw

This 340m² private residence in Port Elizabeth was designed with an industrial aesthetic in mind, and with connectivity between the spaces as a central consideration.

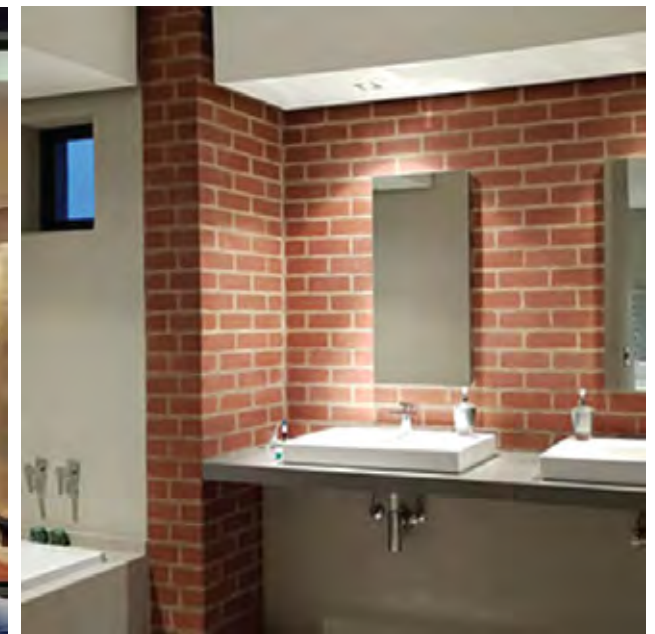
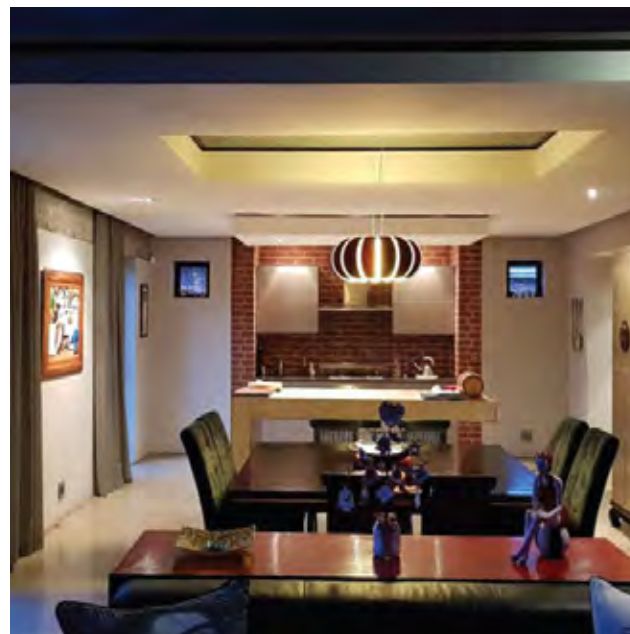
The house was designed around a central galvanised steel framework onto which elements connect, such as a bridge, suspended slabs and roof trusses. The composition is minimalist, almost industrial, which is conveyed as one enters the double volume space. Polished concrete floors, off-shutter concrete and flush pointed facebrick accent walls add to this theme. Two wings linked with a Jarrah hardwood bridge across the double volume allow all areas of the house to feel connected rather than segregated from each other.

Client: Charles Louw

Project Category: Residential

Project Date: 2010

Location: Port Elizabeth, South Africa





SAND- TON

THE LOVAT

Modern upmarket townhouse development in the upmarket suburb of Hurlingham.

*Project Category: Residential
Project Status: Council Submission
Project Date: 2016*

Location: Lovat Road - Hurlingham, Sandton





**TSH-
WANE**

HOUSE RAMAKGOPA

Modern large estate home for an influential client in Tshwane.

Project Category: Residential

Project Status: On hold

Project Date: 2015

Location: Zwafelskloof Estate - Tshwane



RESIDENTIAL

APARTMENT BUILDINGS

JHB-

LINBRO PARK



AL QASR UPMARKET APARTMENTS

Luxury upmarket Islamic designed apartments in the heart of Limbro Park in Johannesburg. Consist of 92, 4 and 3 bed family units with roof top entertainment and 2 soft landscaped courtyards.

*Project Category: Residential
Project Status: Construction stage
Project Date: 2015-2017*

*Location: Qurtuba – Linbro Park,
Johannesburg*







JHB-

SANDTON



RIVER CLUB APARTMENTS

This design proposal for a new upmarket apartment complex in River Club in Sandton, Johannesburg, comprises 50 2-bedroom and 44 3-bedroom units, together with landscaped common areas.

Project Category: Residential

Location: River Club, Johannesburg- South Africa





An architectural rendering of the Eko Atlantic Apartments in Lagos. The image shows two tall, modern buildings with curved, glass-enclosed facades. The building on the left has a more complex, multi-tiered design with balconies. The building on the right is taller and more uniform. Both buildings are situated on a raised platform with a white, stepped facade. In front of the buildings is a street with several cars and a few people walking. The sky is blue with some clouds. The text 'LA-GOS' is overlaid in a white box in the top right corner.

LA-GOS

EKO ATLANTIC APARTMENTS

EKO ATLANTIC TWIN TOWER APARTMENTS

This is a speculative concept design to determine the feasibility of developing luxury apartments at the top business destination in Africa, the Atlantic City. The Architectural concept consist of vertical spines articulated to create curved waves on the glazed facade with projecting balconies. The car park podium roof top is filled with public amenities and facilities in a well landscaped eco-green environment.

*Project Category: Residential
Project Status: Preliminary Design
Project Date: 2015*

Location: Eko Atlantic - Lagos, Nigeria





EAST LONDON

QUENERA HEIGHTS

Luxury upmarket development in East London surrounded by the Quenera River, Boza Bay and the Indian Ocean.

*Project Category: Residential
Project Status: Design Development
Project Date: 2015-2017*

Location: Quenera, East London





EAST LONDON

OXFORD STREET AFFORDABLE HOUSING

Re-development of existing properties to provide much needed affordable homes within the city CBD with retail and parking at street level.

Project Category: Residential

Project Status: Current

Project Date: 2020

Location: East London, Eastern Cape



POLOK- WANE



UNIVERSITY OF LIMPOPO STUDENT RESIDENCE

New 15 000 bed student residence for the University of Limpopo.

*Project Category: Educational Institution
Project Status: Current Project
Project Date: 2017*

Location: University of Limpopo, Polokwane





KZN

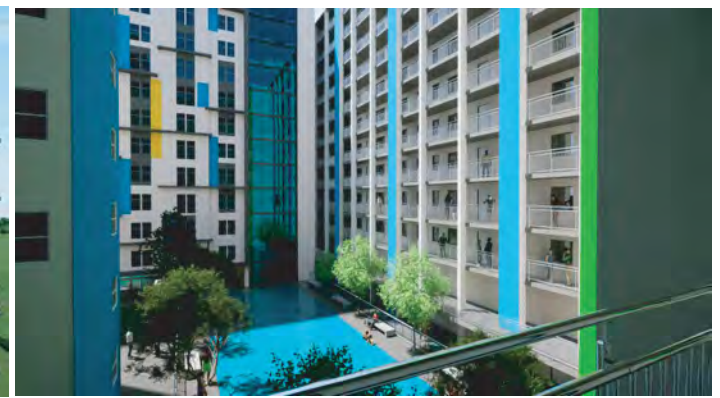
DURBAN UNIVERSITY OF TECHNOLOGY. (DUT).

New 16 000 bed student residence for the DUT.

Project Category: Educational Institution

Project Status: Current

Project Date: 2022







Gordon Lodge - Fitness Centre



Gordon Lodge - Fitness Centre

**EAST
LONDON**

GORDON LODGE STUDENT ACCOMMODATION

New 2062 bed student residence for Walter Sisulu University, East London with supporting facilities and street level retail

*Project Category: Educational Institution Project
Status: Current Project
Project Date: 2019
Location: Gordon Street, East London*





GERMI-STON

28 on
ARTERIAL

ORIEL
VIEW

ARTERIAL ROAD LUXURY APARTMENTS

*Location: 94 Luxury apartments with offices,
coffee shops, gym, laundry etc.*



LA-
GOS





LORENZO TOWERS

Concept Design proposal for a multi-storey luxury hotel apartment building located on a prime site at Lekki Peninsula ,Lagos with paramount views of the Lagoon and Atlantic ocean.

*Project Category: Commercial
Project Status: Pre-feasibility stages
Project Date: 2015*

Location: Lekki - Lagos, Nigeria



COMMERCIAL

R E T A I L



THE ATRIUM

Kempton Square Conference Centre

City of Ekurhuleni

NANDO'S

NANDO'S

NANDO'S

NANDO'S

NANDO'S

NANDO'S

NANDO'S

NANDO'S

NANDO'S

JHB-
GERMISTON

EKURHULENI KEMPTON PARK PRECINCT

New mixed-use development and multi-storey parkade

*Project Category: Institutional
Project Status: Current Project
Project Date: 2018*

Location: Germiston, Ekurhuleni Municipality





EAST LONDON

LATIMERS LANDING WATERFRONT

Re-development of waterfront into a mixed use development including offices, hotel, retail and apartments.

Project Category: Mixed-Use

Project Status: On going

Date 2018

Location: East London, Eastern Cape



TSH- WANE



MADIBA KWENA SHOPPING CENTRE

A modern retail food emporium designed to provide a much needed facility in Atteridgeville.

*Project Category: Retail
Project Status: Current Project
Project Date: 2012*

Location: Atteridgeville, Tshwane





EAST LONDON

SIGNAL HILL DEVELOPMENT

Re-development of Signal Hill into a mixed use development including offices, hotel, retail apartments, theme park and entertainment centre.

Project Category: Mixed-Use

Project Status: On going

Date: 2018

Location: East London, Eastern Cape



COMMERCIAL

OFFICES

VAAL



SEBOKENG OFFICE PARK

This offices development is to provide much needed community development and work oportunities.

Project Category: Commercial

Project Status: Proposal

Project Date: 2015

Location: Sebokeng, Johannesburg





**PORT
ELIZABETH**

PSG OFFICES

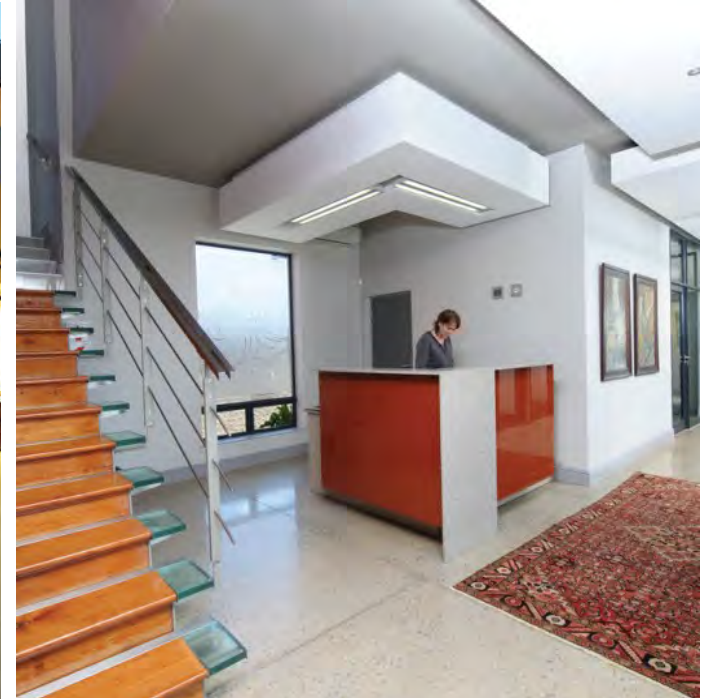
Renovations and additions to existing building.

Project Category: Commercial

Project Status: Completed

Project Date: 2011-2012

Location: Port Elizabeth, Eastern Cape





EAST LONDON

AMATHOLE DISTRICT MUNICIPALITY HEADQUARTERS

ADM headquarters offices and conference facilities.

Project Category: Commercial

Project Status: Current Ongoing PPP Project

Project Date: June 2008

Location: East London, Eastern Cape





**EAST
LONDON**

ESKOM HEADQUARTERS

*Phase 1 development of Eskom
headquarters in East London*

*Project Category: Commercial
Project Status: CompleteProject Project
Date: 1997*

Location: East London, Eastern Cape



EAST LONDON

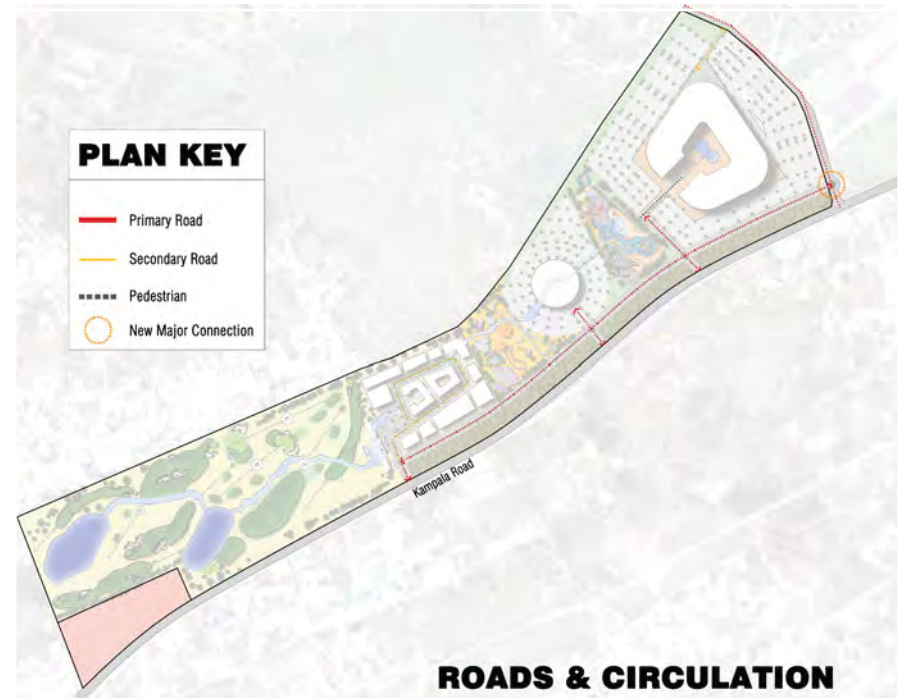
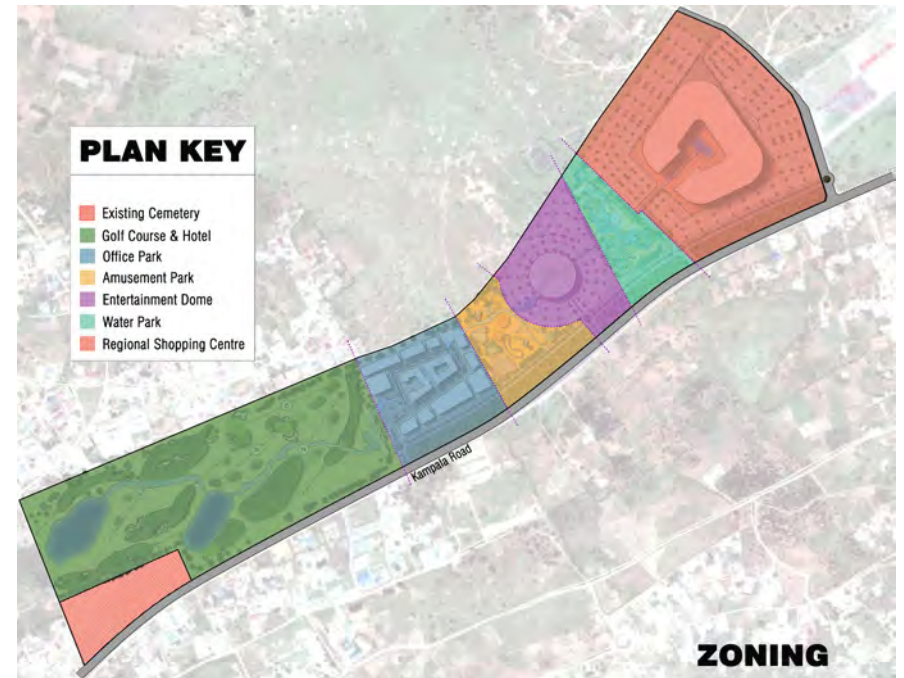


MBARARA MIXED-USE DEVELOPMENT MASTERPLAN

Masterplan for Delta Properties. Consist of a regional shopping complex, offices, theme park, hotel, and a golf course. This is an Eco-green development with the preservation of existing indigenous trees, eco-system, and vegetation. A natural water stream forms the main spine of the development by connecting and linking all activities.

*Project Category: Commercial
Project Status: Preliminary Design
Project Date: 2015*

Location: Mbarara, Uganda





SITE PLAN

ECDC HEADQUARTERS

New offices and conference facilities for ECDC

*Project Category: Commercial
Project Status: Completed Project
Project Date: November 2003*

Location: East London, Eastern Cape





**KAM-
PALA**

INTERNATIONAL CONVENTION CENTRE

Design concept for Delta Properties. Consist of a sub-divisible large conference hall with break away meeting rooms, large entrance/ exhibition area, restaurants, VIP facilities, Parking & ablutions etc. Design depicts local Ugandan national colours/traditional art, indigineous materials such as local stone/ rocks and roundels projecting through a concrete roof slab.

*Project Category: Commercial
Project Status: Preliminary Design
Project Date: 2015*

Location: Kampala, Uganda



COMMERCIAL

HOTELS & LODGES



BOUTIQUE HOTEL

MTH-ATHA

MTH-ATHA

MTHATHA BOUTIQUE HOTEL

Status: SDP Submission
Location: Mthatha, Eastern Cape
Value: R24 Million





LA-
GOS

BANK

VICTORIA ISLAND MIXED USE DEVELOPMENT

Proposal for a mixed-use 20 storey tower building in Lagos comprising of retail, offices, hotel, roof top gym, restaurant, swimming pool, and conference facilities.

*Project Category: Commercial
Project Status: Preliminary Stages
Project Date: 2014*

Location: Victoria Island-Lagos, Nigeria



An aerial photograph of a resort complex nestled in a lush, green forest. A winding river flows through the center of the property. To the left, a large, curved building with a wooden roof and a swimming pool are visible. To the right, another building with a wooden roof and a swimming pool are visible. The surrounding area is filled with tall, green trees and a grassy lawn. The text "RAW-ANDA" is overlaid in a white box in the upper right corner.

RAW- ANDA

KIGINI FOREST HAVEN LODGE

Location: Rawanda





COMMERCIAL

R E C R E A T I O N



2010 WORLD CUP KINGS PARK STADIUM COMPETITION BID

Runner up bid for the 2010 world cup stadium in Durban.

*Project Category: Commercial
Project Status: Project concluded
Project Date: 2008*

Location: Durban, Kwa-Zulu Natal



INDUSTRIAL

FACTORIES



EAST LONDON

DIAMOND PROCESSING FACTORY

Award winning Hi-tech Diamond processing plant and offices.

*Project Category: Industrial
Project Status: Completed Project
Project Date: July 2009*

Location: East London, Eastern Cape



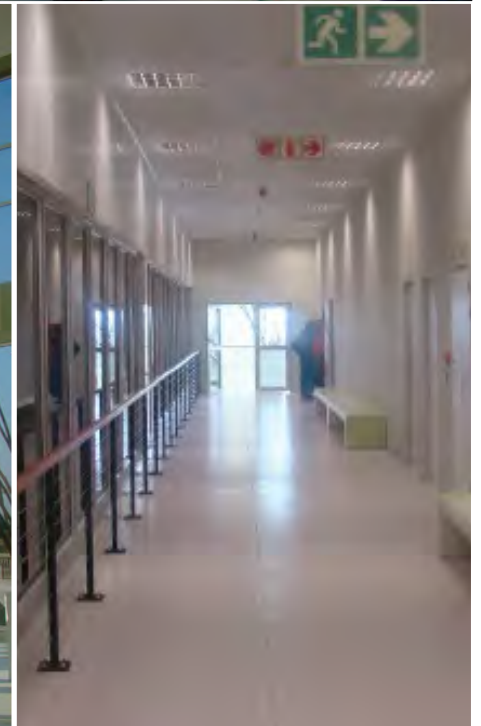
EAST LONDON

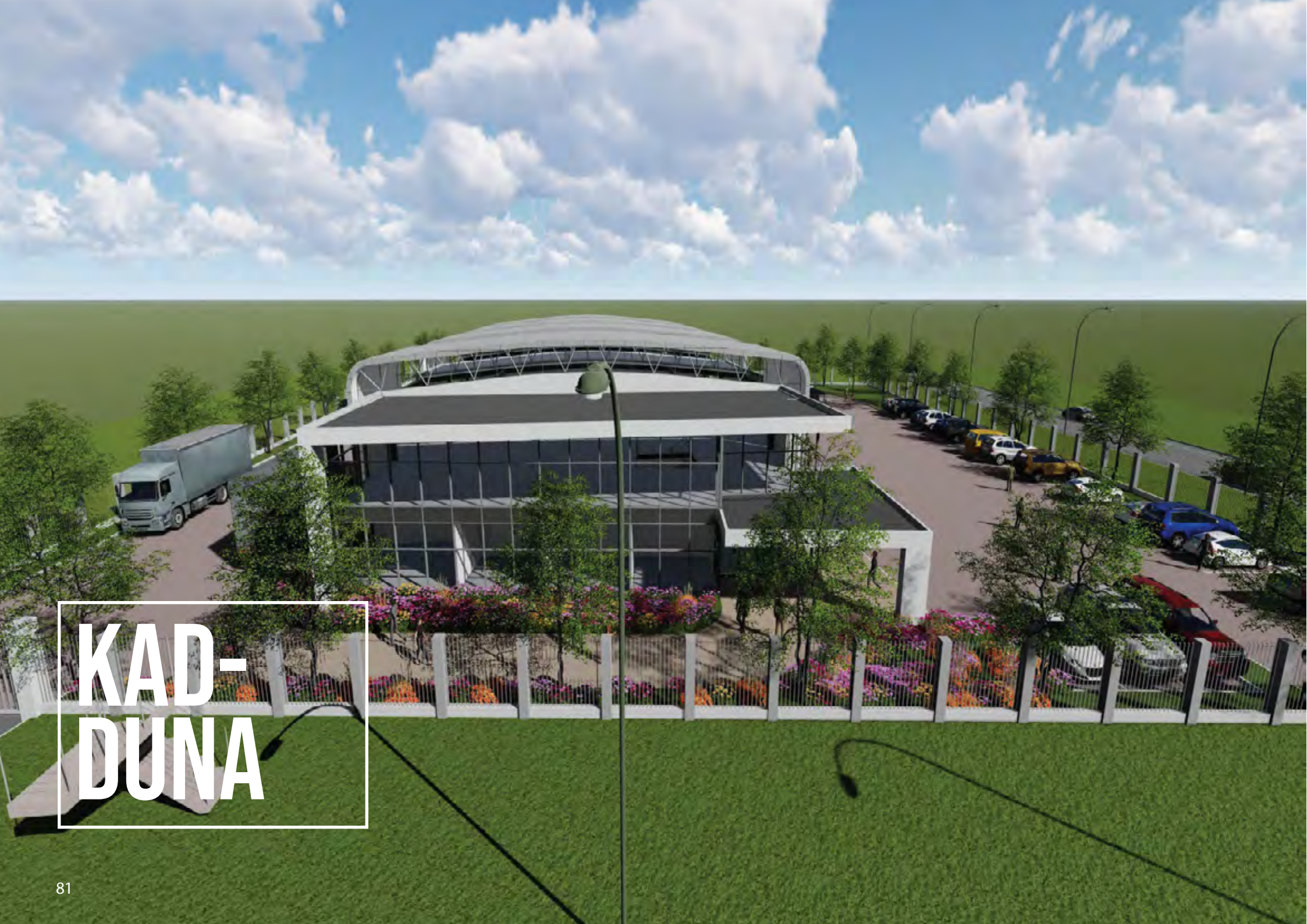
SUNNINGDALE DAIRY

Award winning state of the art Hi-tech fresh milk dairy processing factory and offices.

*Project Category: Industrial
Project Status: Completed Project
Project Date: 2008*

Location: East London, Eastern Cape





KAD-
DUNA

KADUNA TEXTILE FACTORY

*Proposed Textile Factory Development with
associated offices for Kaduna Textile Limited*

*Project Category: Industrial
Project Status: Current
Project Date: 2020*

Location: Kaduna, Nigeria





PE

COEGA MILK FACTORY

Location: PE, South Africa



URBAN DESIGN



EAST
LONDON

EAST LONDON CITY TO SEA BOULEVARD PHASE 1

The "City to Sea" boulevard is a pedestrian link between the "City" and the beachfront "Sea".

Project Category: Transport / Infrastructure

Project Status: Current Project

Project Date: 2019

Location: Moore Street, East London



An aerial architectural rendering of a proposed development in East London. The central feature is a large, oval-shaped building with a translucent, ribbed roof. To its left is a curved pedestrian plaza with a circular fountain and a glass-walled structure. Further left is a multi-story parking garage filled with cars. To the right of the central building is another large parking lot with many cars. The entire development is bordered by a railway line on the left and a road with a bus stop on the right. The text 'EAST LONDON' is overlaid in a white box on the left side.

EAST LONDON

EAST LONDON CITY TO SEA BOULEVARD PHASE 2

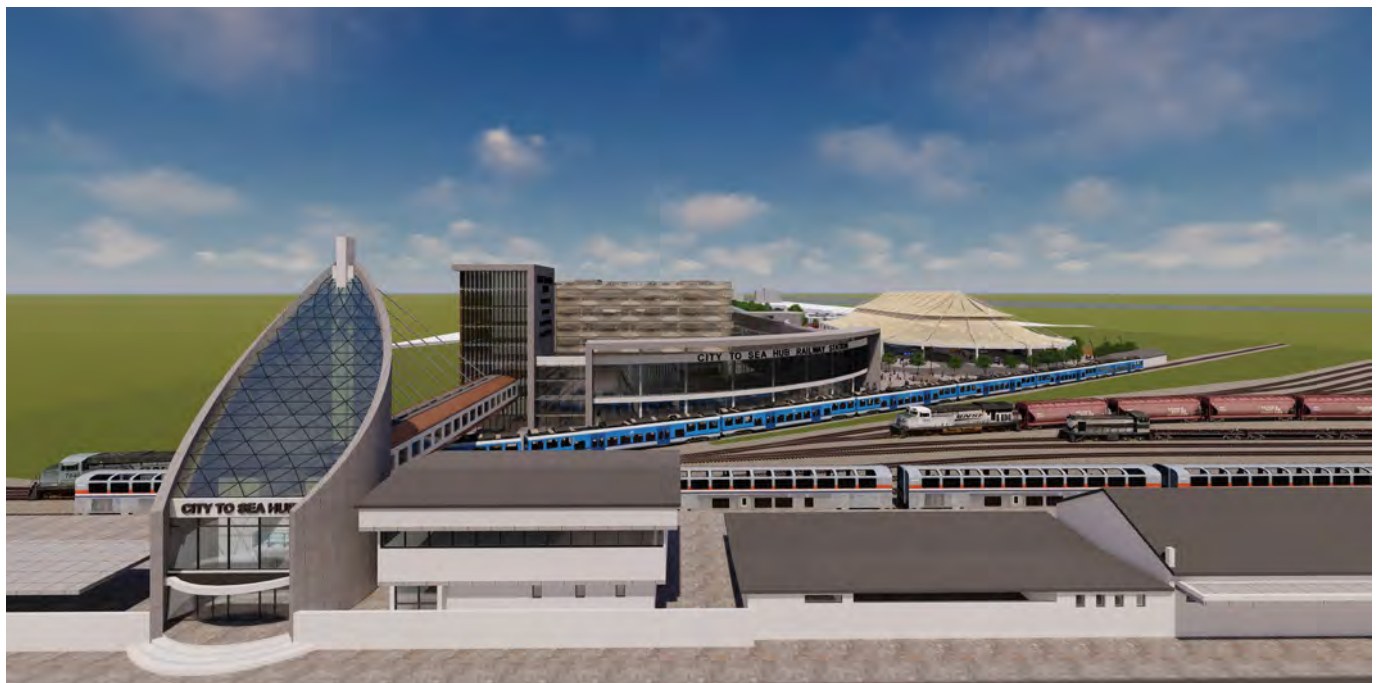
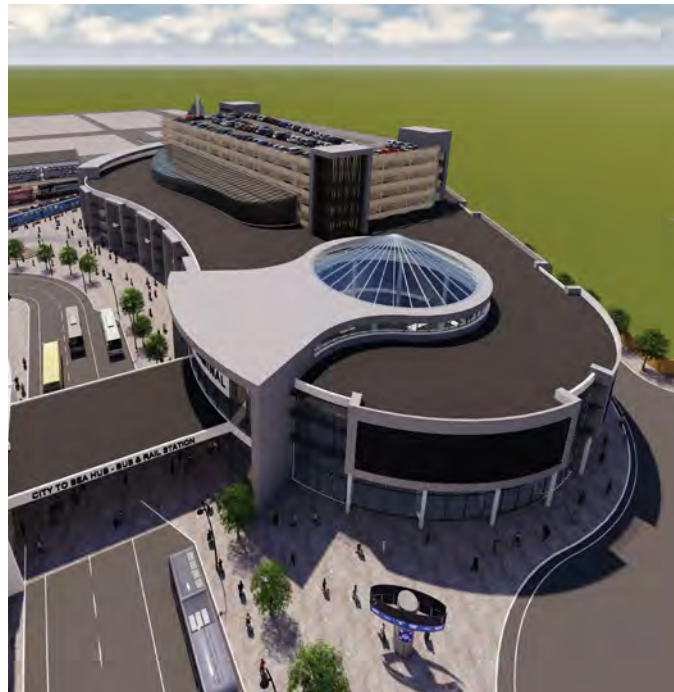
*Bus Depot and Station Street link to Moore
Street via the East London Railway Station*

Project Category: Transport / Infrastructure

Project Status: Current Project

Project Date: 2019

Location: Moore Street, East London





AK- URE

ÀLÀ RESORT RESIDENTIAL

ÀLÀ Resort is an exquisite Resort designed as a mixed and multi-sectoral development in a fully integrated hub within the Proposed Akure Airport Aerotropolis Development - the first of its kind in sub-Saharan Africa.

*Project Category: Mixed-Use
Project Status: Pre-feasibility stages
Project Date: 2019*

Location: Akure, Nigeria



ARTS, CULTURE & HERITAGE

P R O J E C T S

ABUJA

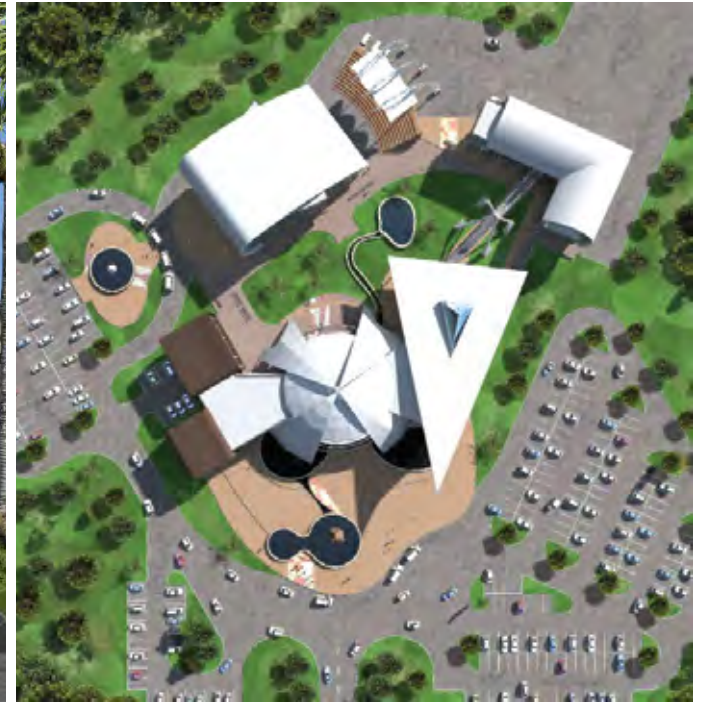


ABUJA NATIONAL GALLERY OF ARTS

Development proposals for the National Art and Cultural Gallery in Abuja.

*Project Category: Arts & Culture
Project Status: Project in abeyance
Project Date: 2005*

Location: Abuja, Nigeria



KZN-

DURBAN



O.R. TAMBO MEMORIAL AND HOMESTEAD PROJECT

The upgrade of Tambo homestead and design of a new memorial and legacy path to honour the life time achievements of ANC leader Mr O.R. Tambo.

*Project Category: Heritage
Project Status: Current Project
Project Date: 2012-15*

Location: Bizana, Kwa-Zulu Natal



EAST LONDON



EAST LONDON ARTS & CULTURE CENTRE

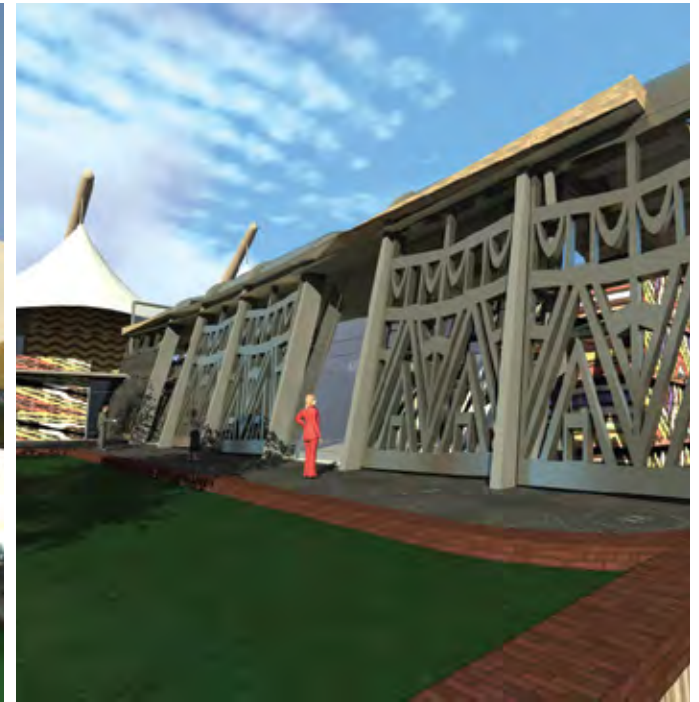
A new modern approach to Art and Cultural facility design in East London.

Project Category: Arts & Culture

Project Status: Current Project

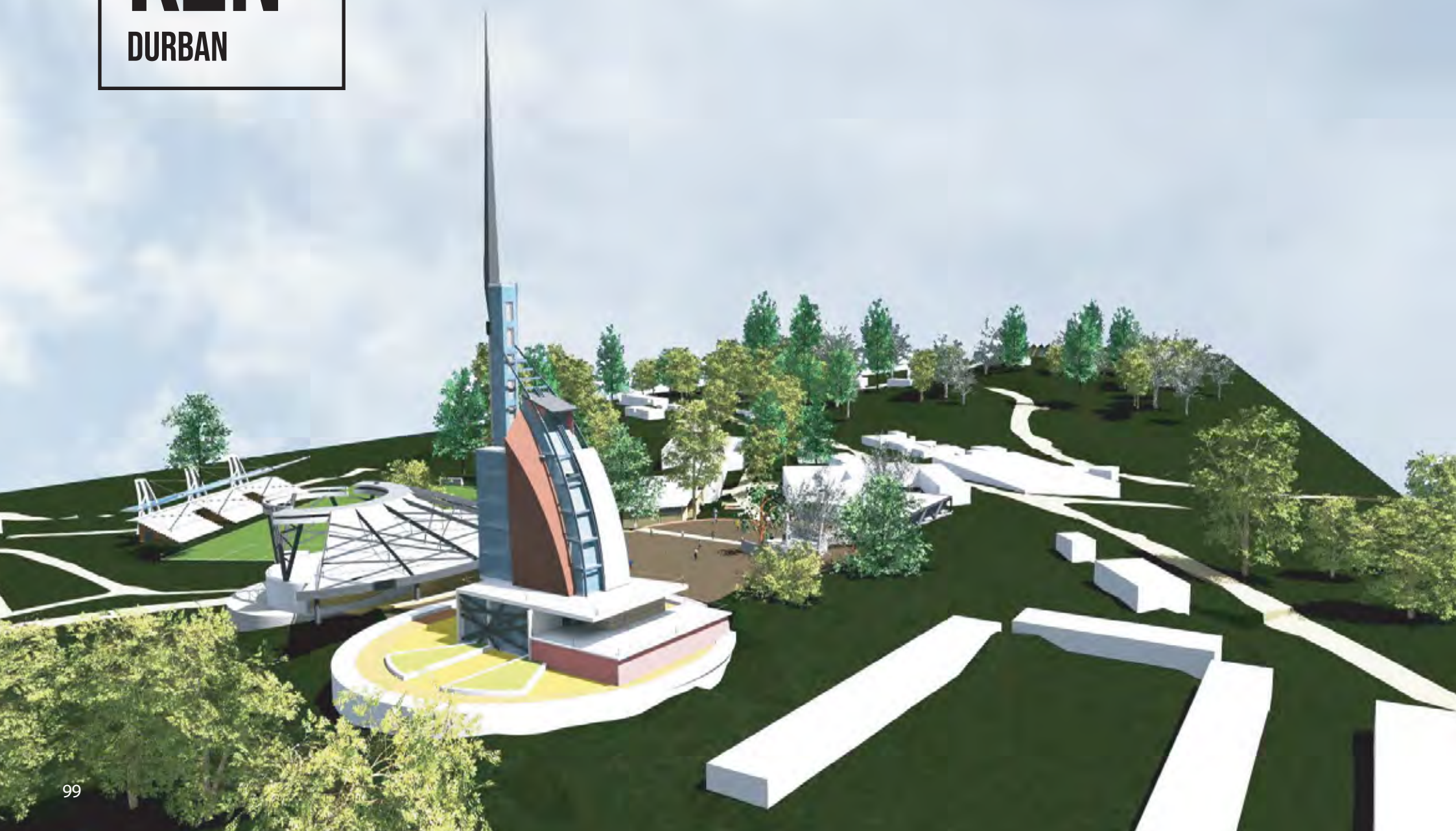
Project Date: 2012-2015

Location: East London, Eastern Cape



KZN-

DURBAN

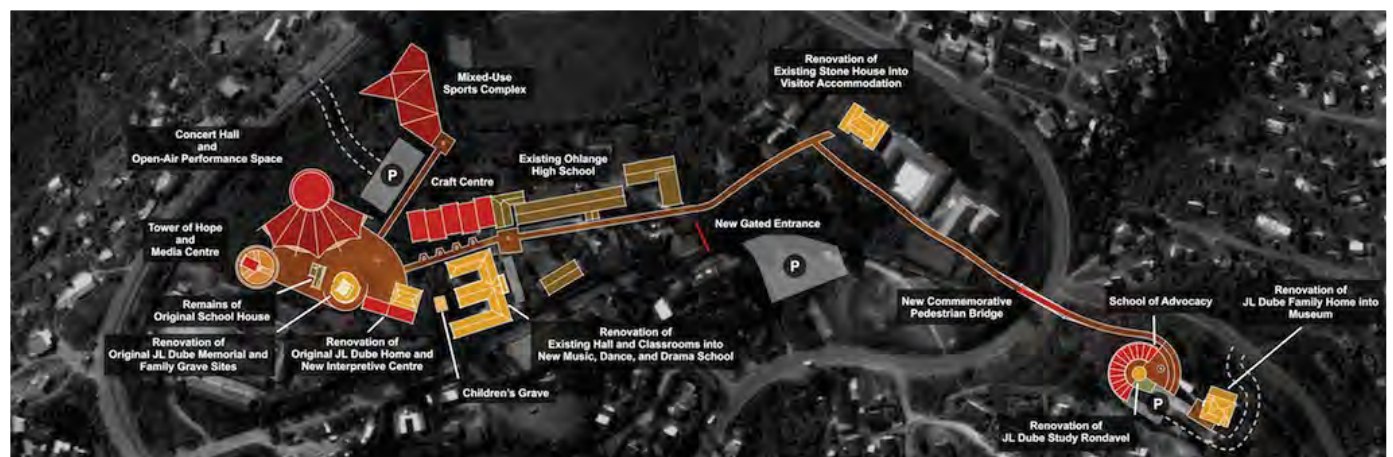


JL DUBE TOWER OF HOPE

The upgrade and conversion of the Dube homestead into a museum, and creation of a heritage bridge link trail to the memorial site. Design of a "tower of hope" to commemorate the legacy and life time achievements of the first president of the ANC Mr J.L.Dube.

*Project Category: Heritage
Project Status: Current Project
Project Date: 2012-15*

Location: Durban, Kwa-Zulu Natal



INSTITUTIONAL

PROJECTS

JHB-

GERMISTON



EKURHULENI HOSPITALITY SCHOOL

A modern hospitality school, providing students with industry specific knowledge to participate in the tourism and hospitality industries.

*Project Category: Educational
Project Status: Current Project
Project Date: 2017*

Location: Germiston, Ekurhuleni Municipality





JHB-

GERMISTON

EKURHULENI KNOWLEDGE CENTRE

A contemporary landmark building that integrates library, knowledge and planetarium functions with office facilities provided.

*Project Category: Institutional
Project Status: Current Project
Project Date: 2017*

Location: Germiston, Ekurhuleni Municipality



PORT ELIZABETH

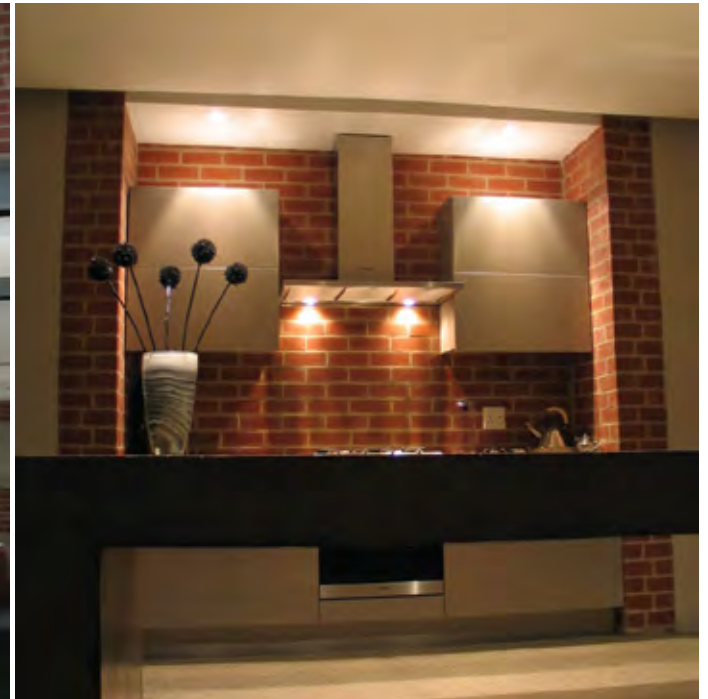


LIVINGSTONE HOSPITAL- ACCIDENT & EMERGENCY CENTRE

This is an upgrade and provision of additional facilities to the existing hospital such as the illustrated accident and emergency unit.

*Project Category: Health
Project Status: Completed Project
Project Date: May 2010*

Location: Port Elizabeth, Eastern Cape





**PORT
ELIZABETH**

LIVINGSTONE HOSPITAL- ONCOLOGY UNIT

This is an upgrade and provision of additional facilities to the existing hospital such as the illustrated Oncology unit.

*Project Category: Health
Project Status: Completed Project
Project Date: 2011*

Location: Port Elizabeth, Eastern Cape



QUEENS TOWN



UPGRADE TO FRONTIER HOSPITAL

Location: Queenstown, Eastern Cape



OTHER

PROJECTS



TSH- WANE



CITY OF TSHWANE EMERGENCY SERVICES UPGRADE

*Upgrade, extensions and additions to the
Pretoria Fire Station.*

*Project Category: Commercial
Project Status: Current Project
Project Date: 2013-15*

Location: Bosman St - Tshwane





EAST LONDON

EAST LONDON AIRPORT PROJECT

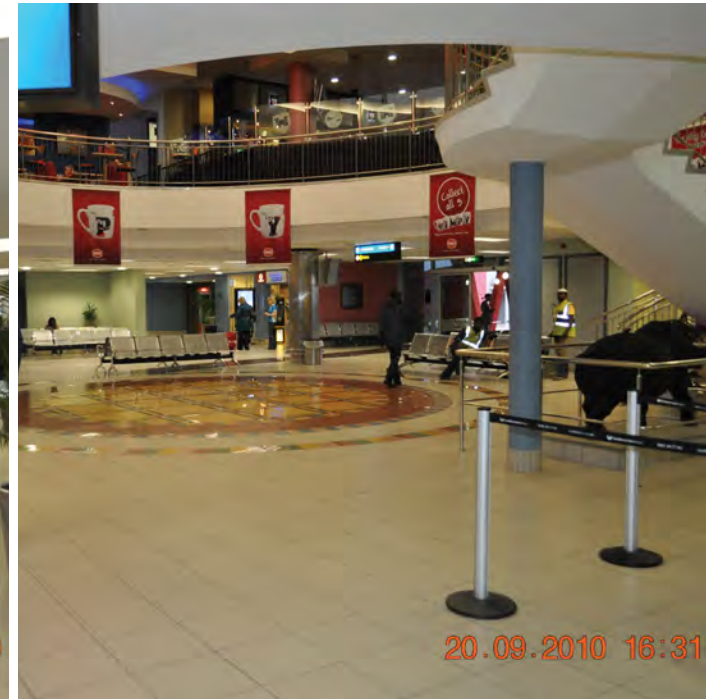
Upgrade, extensions and renovations of the existing terminal building and new car rental terminal building. This project was completed in March 2010.

Project Category: Commercial

Project Status: Completed Project

Project Date: November 2008-March 2010

Location: East London, Eastern Cape



INTERIOR

D E S I G N

LA- GOS



HOUSE OLA INTERIOR

*A modern and masculine house for a bachelor
in a new suburb of Lagos*

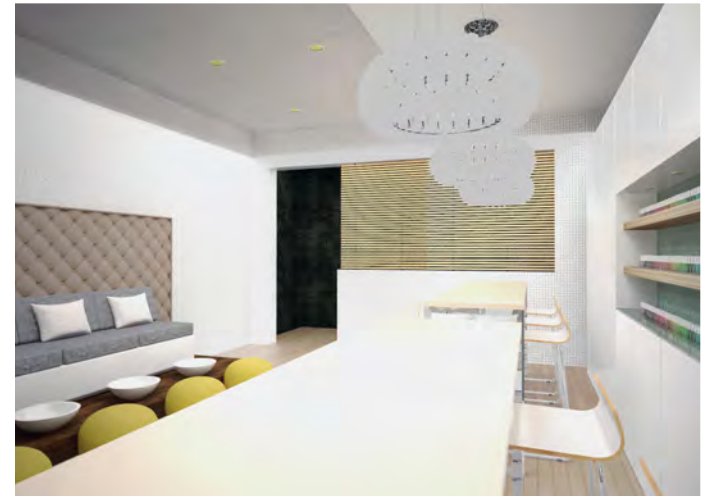
*Project Category: Interior
Project Status: Proposal
Project Date: 2015*

Location: Co-Op Villas - Lekki Island, Nigeria





cure nail bar



NAIL BAR

A quiet oasis away from the busy urban lifestyle in the heart of Pretoria.

Project Category: Interior

Project Status: Proposal

Project Date: 2015

Location: Menlyn Mall - Pretoria



Office 7
Novate House Triple Point
St Helena Road
Beacon Bay
East London
5201

Tel : +27 43 743 0522
Tel : +27 87 150 5726
Fax : +27 43 743 0534
E-mail : info@idcarchitects.co.za

2nd Floor
21 Dreyer Street
Sunclare Building
Claremont
Cape Town
7708

Tel : +27 21 674 5193
Fax : +27 86 652 8108
E-mail : info@idcarchitects.co.za

Suite 302, Ground Floor
Fairview House
Ring Road
Greenacres
Port Elizabeth
6045

Tel : +27 41 363 4487
Fax : +27 41 363 4530
E-mail : architx@mweb.co.za

P.O.Box 12887
Centrahill
PORT ELIZABETH
6006

Silky Oak House
Ballyoaks Office Park
Ground floor
35 Ballyclare Drive
Bryanston
Sandton
2196

Tel: 011 234 8141
Fax: 011 234 8088
Email: info1@idc-architects.co.za

© All rights reserved. 2022



IDC Architects

www.idcarchitects.co.za